


Silent Gliss

BEST PROJECTS





The Architects *of* Silence

- 4** Wall Pavilion of the Zwinger Palace / Dresden – Germany
- 6** Close House, Private Home / Newcastle upon Tyne – United Kingdom
- 8** Sitag – Home of Visions / Sennwald – Switzerland
- 10** La Passion Yacht / Antalya – Turkey
- 12** Double Tree by Hilton Hotel / Wroclaw – Poland
- 14** Doctor's Surgery / Zug – Switzerland
- 16** urbanharbor / Ludwigsburg – Germany
- 18** Savings Bank / Leer – Germany
- 20** Donegal House, Private Home / County Donegal – Ireland
- 22** The Marmara Taksim Hotel / Istanbul – Turkey
- 24** Esterházy Vineyard / Trausdorf – Austria
- 26** P91 – Potsdamer 91 / Berlin – Germany
- 28** Beach House, Private Home / Girona – Spain
- 30** Gifu Media Cosmos / Gifu – Japan
- 32** Radisson Blu Hotel / Mannheim – Germany
- 34** Company Restaurant / Bedfordshire – United Kingdom
- 36** The Barrhead Foundry / Glasgow – United Kingdom
- 38** The Sanctuary at Bunurong Memorial Park / Bangholme – Australia
- 40** Castle / Saarbrücken – Germany
- 42** Deaconry Bethanien / Zurich – Switzerland
- 44** Ladies Lake, Private Home / Scotland – United Kingdom
- 46** Private Residence / Bangkok – Thailand



A

PROJECT DETAILS

Customer
Weichert interior design

Architects
Rainer Henke architects' office

Photography
Roland Troll

SELECTED SYSTEM INFO



SG 4960 / Multiscreen 5%

Medium duty motorized roller blind system with very quiet and smooth operation due to high-end tubular motor

Various "scenes" programmable

Operation of two systems with one motor for reduced light gap between systems

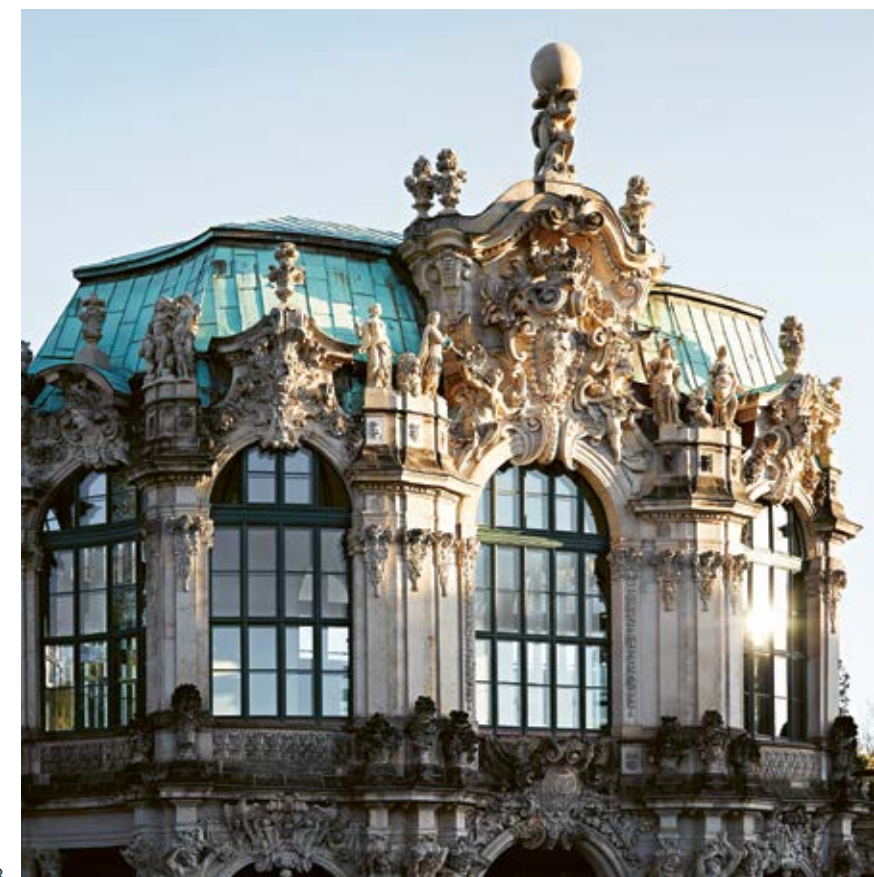
Fixed wall switch, radio remote or app control

Screen fabric with three openness factors to manage natural light

Wall Pavilion of the Zwinger Palace

The wall pavilion of the Zwinger Palace in Dresden was built at the beginning of the 18th century under the direction of the architect Matthäus Daniel Pöppelmann and the sculptor Balthasar Permoser. The pavilion, which has a ballroom on the upper floor and a vestibule on the Zwinger courtyard level with flights of stairs giving access to the Zwinger ramparts, was completely refurbished.

The color scheme, floor coverings and windows of the ballroom were retained and restored. Targeted objectives were put in place to improve energy efficiency. To help achieve these measures, SG 4960 roller blind systems were selected to manage daylight through individual and group control.



B

A Roller blind system
B Wall pavilion, roller blind system from outside



A

Close Private Home

PROJECT DETAILS

Customer
Diane Clark
Inside Contracts – Commercial Design

Owner
Graham Wylie

Architects
Doonan Architects

Photography
Andrew Hepinstall

SELECTED SYSTEM INFO

SG 2195 recessed / Colorama 2

Electrically operated wintergarden system

Horizontal, sloped, bent and arched applications

Blinds can be single, double or triple operated from one motor

Fixed wall switch, radio remote or app control

Elegant roman blind effect with Silent Gliss technical or decorative fabrics

Versatile, semitransparent fabric with extensive color range

Close House, is a listed former mansion house set in the grounds of a luxury golf club in Newcastle upon Tyne. Since 2000 it operated as a hotel and wedding venue before being transformed into a family home.

This project focused on the Garden Room. Attention to detail was imperative with the challenge to install the blinds as discreetly as possible. Recess and custom colored profiles were specified to enable the wintergarden systems

SG 2195 to fit close to the walls and minimize light ingress. Colorama 2 fabric was selected as the wide color range allowed a fabric to be chosen that could bend in seamlessly with the interior decor.

The electric side window and doors were fitted with motorized roller blinds and are operated by the Silent Gliss remote control system. They were installed in a recessed channel up above the ceiling level to ensure the blinds were hidden when not in use.



B



Sitag Home of Visions

— Switzerland

8–9

The Sitag company headquarters in Sennwald has 21,000 sqm of production area and 1,000 sqm of exhibition space. The company, which is globally active, provides intelligent, sustainable solutions for life and work in the office.

The workspace has been separated, both visually and acoustically, from the event area by the SG 5600 electrically operated curtain track system. The use of Wave curtains promotes a relaxed atmosphere. Room-dividing systems SG 6100 have also been installed.

The Vertical Waves lend enchantment to the room with the special light and shadow effects created by their counter-rotating waves. The louvres make it possible to control the lighting according to tasks in hand, creating a pleasant working environment for the staff.

The combination of different Silent Gliss systems skilfully creates a sense of excitement in the newly refurbished business premises of Sitag – Home of Visions.

A



B

PROJECT DETAILS

Owner
Sitag AG

Interior Design
Sitag AG Design Team

Photography
Johannes Eisenhut

A Room divider system
B Vertical Waves, design Andrea

SELECTED SYSTEM INFO



SG 6100 with Wave / customer fabric

Perfectly suited as a design element for light to heavy curtains

Robust and flexible room divider system

Wave curtain-heading offers smooth undulating curves when open or closed



A

PROJECT DETAILS

Customer
Ekat & Cupal International Textile

Builder
Sarp Yachts, Antalya

Interior Designer
Adam Lay Studio

Photography
Sarp Yacht Photo Team

C



La Passion Yacht

SELECTED SYSTEM INFO



SG 2350 / customer fabric

Electrically operated roman blind system

Elegant appearance as all working parts are hidden in the headbox (including motor)

Soft or hard fold

Fixed wall switch, radio remote or app control

Created by Adam Lay Studio, the interior of Sarp Yachts' new 46m motor yacht "La Passion" won the World Superyacht 2017 Award.

One of the contributing factors to winning this award was the "elegant and modern interior design". It blends loft apartment styling and mountain chalet influences with a combination of high end natural timber and metal finishes. The aim was to produce a sophisticated and elegant interior, interwoven with clean simplicity of design that results in an inviting, comfortable and relaxing atmosphere.

Roman blinds were selected because they offer a soft design element but still kept neat lines throughout. For the motorized roller blinds Silent Gliss fabric Deep was chosen for its excellent shading properties.



B

A/B Motorized roman blind system
C La Passion yacht

Double Tree by Hilton



This hotel is situated in the heart of Wrocław, in the futuristic OVO Complex. With more than 190 rooms, it offers guests a combination of luxury, comfort and good taste.

The combination of a screen fabric from the Silent Gliss Collection and a remote control system provides perfect control of light across the entire glass facade of the restaurant.

Owing to the size of the windows, motorized Silent Gliss roller blind systems were selected for use in the hotel restaurant and lobby.

A



B

PROJECT DETAILS

Customer
Blackout Sp. z o.o.

General Contractor
Eiffage Polska Budownictwo

Architects
**Gottesman Szmelcman Architecture SARL
JSK Architekci Sp. z o.o.**

Photography
Hilton Hotels

A Motorized roller blind systems
B DoubleTree by Hilton Hotel Wrocław

SELECTED SYSTEM INFO



SG 4870 / Multiscreen 5%

Medium-heavy duty motorized roller blind system

Wall, ceiling or recess fitting. Special features like adjustable stainless steel brackets for easy vertical adjustment of fabric.

Fixed wall switch, radio remote or app control

Screen fabric with three openness factors to manage natural light

PROJECT DETAILS

Customer
Hans Hassler AG

Architects
Sylvia & Kurt Schenk-Architekten AG

Photography
Janine van der Meij

SELECTED
SYSTEM INFO



SG 2950 / Multi Shadow / Design Andrea

Motorized Silent Gliss Vertical Wave blind system with unique, eye-catching design

Louvre widths 89mm and 127mm

Available in three designs: Andrea, Maria and Annika

Suitable for sloped applications

Open-close-tilt operation with fixed switch or remote control

Ideal fabric for digital printing and laser cutting due to its fine structure

Doctor's Surgery

The upper floors of the former office building in Zug were converted into five high-quality apartments. On the ground floor, a doctor's surgery is completely integrated into the existing building structure. The entire facade, in addition to several structural features of the property, are protected by a preservation order.

The motorized Vertical Waves (design Andrea) will guarantee light

management, protection of sight lines and privacy during medical examinations.

Hidden behind the vertical blind systems, roller blinds are mounted in the smallest possible space, and provide room darkening for special examinations. Everything is controlled by radio at the touch of a button, making operation simple and easy.

- A Chain operated Vertical Waves
- B Chain operated roller blind system
- C Electric operated Vertical Waves



urban-harbor

After being functionally separated for more than 125 years, living, eating, accommodation and work have been reunited and reorganized. From human being to utility and thence to architecture – this is the concept at maxmaier urban-development. At the Werkzentrum Weststadt in Ludwigsburg, this concept has been put into practice with the revitalization architecture of the urban-harbor.



A



B



C

One of its highlights is the “illuminated cloud”, constructed from curved SG 6465 profiles featuring Colorama 2 fabric, which has been laser cut according to customer specification.

This cloud is illuminated using LED technology and can be moved around to create individual lighting moods to suit specific occasions.

PROJECT DETAILS

Owner
maxmaier urbandevelopment

Photography
Mario Stockhausen

SELECTED SYSTEM INFO



SG 6465 / Colorama 2

An example of the versatility of Silent Gliss systems as design or decorative elements

Elegant, thin and bendable profile, min. radius 80mm

For light or medium weight curtains

Perfect synergy between technology and textile

Versatile, semitransparent fabric with extensive color range

A/B/C Curved curtain track profiles

Leer Savings Bank

This newly built bank in Leer town center, houses a merger between the savings banks of Leer and Wittmund. The core of the building consists of two generously proportioned atria, which provide light for the customer hall and forum. Openness and communication were key objectives for the savings bank building.

All rooms have a direct line of sight to the atria, which means that light control takes on a key

role. To manage this, Silent Gliss skylight systems have been integrated into the steel construction. The adjoining offices are fitted with 200 Silent Gliss roller blind systems and 20 electric curtain track systems with Wave curtains.



A



B

A Electric curtain track system
B Skylight system

PROJECT DETAILS

Customer
Raumausstattung Ingo Klüß

Constructor
**gpl Grundstücks- und
Projektmanagement-Gesellschaft
LeerWittmund mbH**

Architects
**Ellwanger Menzel Architekten
Ingenieure GmbH**

Photography
Regine Rabanus

SELECTED SYSTEM INFO



SG 5600 with Wave / Leviso

The world's most silent motorized curtain track system

Automatic or easy manual limit setting

Patented roller technology enables extremely smooth operation

Equipped with "Touch and Go" and an integrated manual override operation

Permanent positioning sensor, keeps end positions without power

Luxurious and elegant dimout fabric with classic structure and extensive color range



PROJECT DETAILS

Customer
Fergal Speers, Local Blinds

Architects
Michael McBride Architectural Services

Photography
Roisin Sweeny
Claudio Salviato

SELECTED SYSTEM INFO



SG 4960 / Multiscreen 5%

Medium duty motorized roller blind system with very quiet and smooth operation due to high-end tubular motor

Various “scenes” programmable

Operation of two systems with one motor for reduced light gap between systems

Fixed wall switch, radio remote or app control

Screen fabric with three openness factors to manage natural light

A Donegal House
B Motorized roller blind systems

A



Donegal House

Private Home

A privately commissioned property located in County Donegal perched on a cliff edge at Sheephaven Bay, overlooking the Atlantic Ocean.

Not surprisingly, the client wanted unrestricted views with the option of sun screening and privacy when required. The challenge was to create a seamless shading solution across 14 large windows of different sizes, (up to 4.5m drop, 1.8m wide).

System SG 4960 motorized roller blinds with Multiscreen were specified with guide rails. The blinds were all fitted in a complex network of platforms encased in a continuous pelmet.

The systems are controlled with a 15 channel remote which allows the blinds to be operated individually, in groups and allowed an intermediate stop position which

follows the contour of the unique gull wing roof.

Local Blinds puts the success of this project down to a close liaison between themselves, the architect, contractor and Silent Gliss Sales Representative throughout the project.



A

PROJECT DETAILS

Customer
Ekat & Cupal International Textile

Interior Designer
Wilson Associates New York
Laser Cut Design by ID Istanbul

Photography
The Marmara Group

SELECTED SYSTEM INFO



SG 4910 / SG 4830 / Element / Laser cut

Medium-heavy duty chain operated roller blind systems

Customers can create their own laser cut designs on fabrics from the Silent Gliss Collection

300cm wide dimout fabric in bright, contemporary colors

The Marmara Taksim Hotel

The Marmara Collection is one of the best known hotel chains in Turkey with 5 hotels across the country. Innovation is key, built on a philosophy of “not static but dynamic”, which means each hotel is unique in contemporary Turkish design but all deliver the highest standards of service.

The 250 laser cut roller blinds were installed throughout the hotel in Istanbul. The laser cut design was created by ID Istanbul, the idea was to provide a shading solution but with a unique Turkish design feel!

A/B Chain operated roller blind systems



B

Esterházy Vineyard

The historic Meierhof Trausdorf farmhouse is located near Eisenstadt, in the Burgenland region of Austria. In the past this aging complex of long, narrow buildings was used primarily for agricultural purposes. The neighboring Esterházy Vineyard decided on a change of use to revitalize the facility.



A

A/B/C Room divider system with Wave



B



C

System SG 6100 was installed with Wave curtains and functions as a room dividing system to create a flexible space. In doing this, the Esterházy Vineyard was able to create a stylish, generously sized ballroom. The color scheme of the inner space was inspired by the natural materials discovered there.

The architects' input resulted in an unobtrusive, harmonious conversion of the old building that has breathed new life into it while still respecting its character.

PROJECT DETAILS

Owner
Esterházy Wein GmbH

Architects
AllesWirdGut Architektur ZT GmbH

Interior Designer
Mobimenti Architekten Wien

Photography
Guilherme Silva da Rosa, AllesWirdGut

SELECTED SYSTEM INFO



SG 6100 with Wave / customer fabric

Perfectly suited as a design element for light to heavy curtains

Robust and flexible room divider system

Wave curtain-heading offers smooth undulating curves when open or closed



A

PROJECT DETAILS

Customer
sonnenschutz.com GmbH

Architects
**Arne Häntsch Mattmüller AHM
Architekten BDA**

Photography
Robert Herrmann

SELECTED SYSTEM INFO

SG 2195 / Aluscreen Futura

Electrically operated skylight shading system

Elegant roman blind effect with Silent Gliss technical or decorative fabrics

Horizontal, sloped, bent and arched applications

Fixed wall switch, radio remote or app control

Aluminium backed screen fabric with high solar reflection and excellent view through

P91 Potsdamer 91

— Germany

Back in the nineteenth century, the area around the Neue West listed architectural ensemble at 91 Potsdamer Strasse, in Berlin's Tiergarten district, were the most fashionable addresses in Berlin. Here, a cultural center offering 4,000 sqm of commercial and retail space for creative and artistic purposes has been created, bearing the signature of the Berlin architectural team AHM Architekten BDA.

The interior shading of the wintergarden in the roof structure was provided by Silent Gliss skylight system SG 2195. When retracted, the fabric stacks discreetly under the skylights in the rear side wall. The metal construction of the facade, with its filigree structural

elements, presented a challenge – particularly for the curved guide rails with their drive belts on the inside. The motors were mounted in such a way as to both guarantee their functionality and protect the surfaces.



A Skylight system

B Architectural ensemble at 91 Potsdamer Strasse

B



A

Beach Private Home House

PROJECT DETAILS

Architects & Interior Designer
OAB – Office of Architecture in Barcelona
Lucía Ferrater Arquer & Xavier Martí Galí

Photography
Joan Guillamat Castells

SELECTED SYSTEM INFO



SG 8910 / Wooden Alpine 50mm

Luxurious mono controlled 50mm venetian blind system – one single cord permits raising, lowering and tilting of the slats

Available with real wood, aluminum or leather slats

Wide and attractive slat color choice

This house is built in a narrow and deep area between two streets in Port de la Selva in Girona. The facades respect the low-level buildings which are typical of the local area and fit seamlessly with the traditional architecture as if they had been there forever. Given the depth of the plot and the narrowness of the street, a bright, well-ventilated interior patio was created for the days when there are strong winds.

As an alternative to traditional headings, Wave curtains were chosen in the living room for a more contemporary look.

Venetian blind systems SG 8910 offer a practical and flexible shading solution that perfectly complements the design intent. The 50mm wooden slats can be finely adjusted to manage the light, glare and temperature in the room.

A Hand operated curtain track system
B Cord operated venetian blind system



B

Gifu Media Cosmos

Gifu Media Cosmos is a community center and library located in Gifu, central Japan. The structure and its interior was designed by architect Toyo Ito and is characterized by an undulating latticed wooden ceiling. Numerous curved globes act and resemble giant lamp shades as they filter natural sunlight into the space, defining the circular “knowledge hubs” they encapsulate.

Silent Gliss installed curtain tracks SG 6370 and SG 6100 with Wave based on specially designed fabric to create the feeling of space, perfectly matching the curved globes.

Another highlight is the pleated blind system SG 8500 featuring “Washi” – traditional Japanese paper – which was specially treated to be flame retardant. Roller blinds SG 4880 with Safescreen fabric made of 100% coated fiber glass are installed on all surrounding windows.



A



B



C

- A/C Pleated blind system and hand operated curtain track system
B Pleated blind system

PROJECT DETAILS

Owner
Gifu City Office

Architects
Toyo Ito & Associates

Textile Designer
Yoko Ando Design

Photography
Hiroshi Tanigawa, ToLoLo studio

SELECTED SYSTEM INFO



SG 8500 / Japanese Paper “Washi”

Pleated blind systems – decorative and functional window treatment solution

Versatile use for various window forms, e.g. wintergarden and skylights

Handle, chain, pull cord, crank or electric operation

Small stacking dimensions for use in restricted application areas

PROJECT DETAILS

Customer
Kahl Büroeinrichtungen GmbH

Constructor
DIRINGER & SCHEIDEL
Unternehmensgruppe

Architects
blocher partners

Photography
Roland Troll

A



Radisson Blu Hotel

SELECTED
SYSTEM INFO



SG 5600 / Sunset

The world's most silent motorized curtain track system

Automatic or easy manual limit setting

Patented roller technology enables extremely smooth operation

Equipped with "Touch and Go" and an integrated manual override operation

Permanent positioning sensor, keeps end positions without power

Beautiful and tactile soft fabric with the same color on both sides. A black yarn woven between the two sides offers excellent dimout performance.

Experience Meetings is a concept by Radisson Blu that offers a harmonious blend of modern conference rooms, connectivity and balanced diet with perfect service, satisfaction and sustainability.

In the new Radisson Blu Hotel in Mannheim in the Q 6 Q 7 district, the nine conference and meeting rooms are equipped with the latest technology and flooded with light.

To regulate the light, SG 5600 electric curtain tracks were installed,

partly painted in RAL colors to match the color of the coves. Sunset fabric was chosen to allow suitable lighting conditions for projecting presentations. The operating system for the curtain tracks, which is integrated into the automation system for the building, makes it possible to vary the level of darkness at the touch of a button and adapt it to the prevailing lighting conditions.

A/B Electric operated curtain track system



B

Company Restaurant

This staff restaurant in Bedfordshire was created for the offices of a dynamic IT company, who wanted a fresh and vibrant multi-purpose environment.

The space is used for staff dining and relaxation, informal meetings and to host private clients.

The designers took inspiration from a modern art gallery exhibiting Pop Art Works, using bright and contemporary seating that would invigorate key thinkers! The cloud pendant lighting is a play both on ideas and cloud based computing.

Wave curtains in Colorama 2 (with sound absorption properties), were included so that a discrete business meeting space can be created when required.

To complete the look Vertical Wave systems Sg 2950 were used at the main windows.



A

PROJECT DETAILS

Customer
Jamie Hemsall Interior Design

Interior Designer
Richard Bond

Photography
Henry J Allen

SELECTED SYSTEM INFO

SG 2950 / Multi Visio / Design Andrea

Motorized Silent Gliss Vertical Wave blind system with unique, eye-catching design

Louvre widths 89mm and 127mm

Available in three designs: Andrea, Maria and Annika

Suitable for sloped applications

Open-close-tilt operation with fixed switch or remote control

Versatile fabric for all stiff applications and specifically recommended for the Silent Gliss Vertical Waves



B

A/B Electric operated Vertical Waves

PROJECT DETAILS

Customer
**Blind Solutions
Service Graphics Ltd.**

Photography
**Andy Davie
David Phillips**

SELECTED SYSTEM INFO



SG 4880 / customer fabric

Large format roller blinds with widths up to 450cm and drops up to 700cm

Quiet, heavy duty system

Patented Silent Gliss Quick Twist permits easy on-site adjustments of the headrail to minimise fabric roll off

Fixed wall switch, radio remote or app control

A



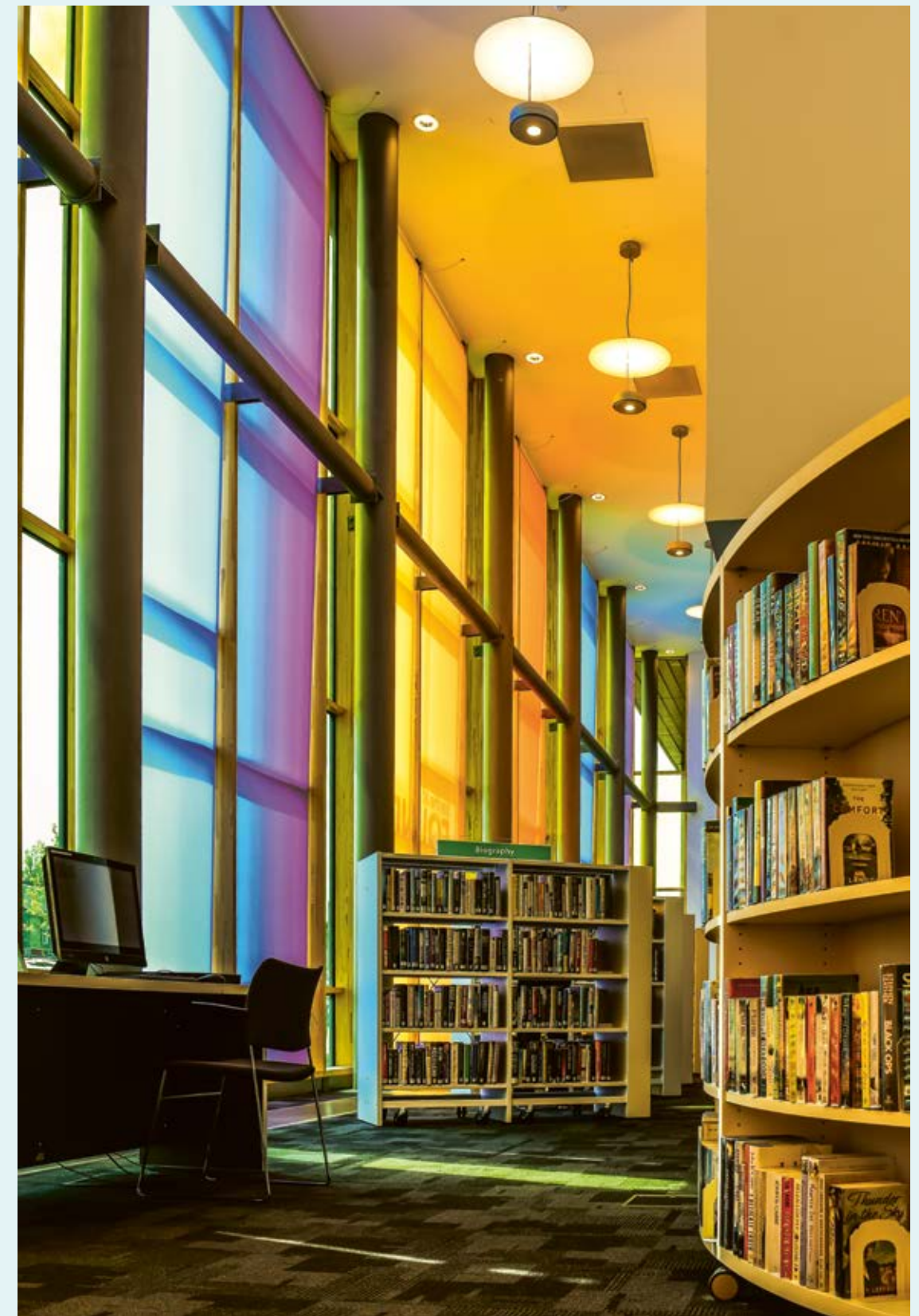
The Barrhead Foundry

The Barrhead Foundry in Glasgow is a Sports Centre which has undergone an extensive refurbishment. It provides a full range of fitness facilities including a pool but also offers learning, conference and training rooms.

This public space boasts floor to ceiling glazing which looks fantastic,

but required a robust and flexible shading solution. The SG 4880 roller blinds met the specification perfectly. Wide blinds with long drops were easily achieved with a system which can go up to 31.5m². The radio controls allow staff to adjust light levels easily throughout the long working day.

A/B Electric operated roller blind systems



B

PROJECT DETAILS

Architects
BVN Architects

Builder
Hansen Yuncken

Photography
Morgan Wotton

SELECTED
SYSTEM INFO

SG 5300 with Wave / customer fabric

Selected because the 3 channel profile makes it the most flexible of all electric curtain systems

Horizontal, straight and curved systems possible

Fixed wall switch, radio remote or app control

The Sanctuary at Bunurong Memorial Park



A

A/B Electric curtain track and roller blind systems
C The Sanctuary

B



C



The Sanctuary was built by Hansen Yuncken who are a respected builder of major construction projects in Melbourne since 1918. Uniquely located at the lake, the Sanctuary can be hired for a variety of events.

Silent Gliss installed numerous motorized roller blinds at varying heights over the high level glazing and two very large motorized curtain tracks SG 5300 on the lower section.

There were multiple challenges during the project. A good example was the blind brackets which had to be fixed from the outside of the building using a boom lift prior to any glazing being installed.

When it was time to measure the large tracks, lasers were used to determine the gradual radius of all the customized welded column brackets. An overall radius and length were supplied to the factory resulting in a perfect fit thanks to the expertise of the Silent Gliss bending team.

Saarbrücken Castle



With its 240 sqm floor area, the ballroom is the most impressive event space in Saarbrücken's 18th century Baroque castle. Planned by the architect Professor Gottfried Böhm based on the original ballroom dimensions, the air-conditioned hall is equipped with the latest events technology and can accommodate up to 320 people.

Krüger Architekten PartG were commissioned to replace the existing blinds, and to integrate their replacements into both the color scheme and a new, up-to-date operating system for the electrical facilities.

The SG 5600 electric curtain track system was installed in the existing coves of the grand ballroom.

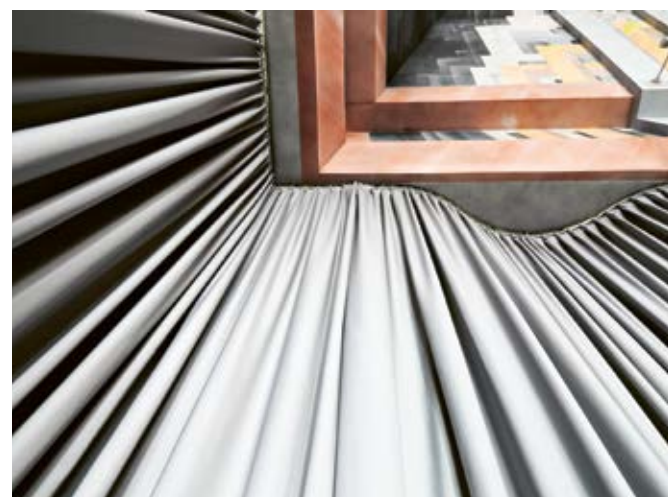
In each case, two electric tracks were mounted behind one another, so as to be able to operate the light protection system independently of the darkening system.

The biggest challenges were the curved layouts and the extreme variations in the height of the hangings, which ranged from approximately 2.5 to 8 meters. For the upper windows, SG 2350 electric roman blind systems were installed. Colorama 2 fabric was chosen as it could provide shading within the chosen color scheme, Somnia fabric was selected for the room darkening curtains.

Germany

40–41

A



B

PROJECT DETAILS

Customer
Einrichtungen Maurer GmbH

Architects
Krüger Architekten PartG

Photography
Roland Troll

- A Electric curtain track and roman blind systems
- B Electric curtain track system
- C Saarbrücken castle

SELECTED SYSTEM INFO



SG 5600 / Somnia

The world's most silent motorized curtain track system

Patented roller technology enables extremely smooth operation

Equipped with "Touch and Go" and an integrated manual override operation

Permanent positioning sensor, keeps end positions without power

Where total darkness is the goal, Somnia blackout fabric is the perfect solution

C





A



B

PROJECT DETAILS

Customer
Teo Jakob AG

Architects
E2A Architekten

Photography
Simon Zangger, allink

Deaconry Bethanien

— Switzerland

The non-profit organization Deaconry Bethanien is providing new services in the social sector, based on a modern social welfare culture and long-term experience in care and social commitment.

The modern, 40 meter-high, 12-storey building in Zurich houses the Placid Hotel, the Buckhuser Restaurant, conference rooms, the Pallivita Bethanien palliative skills center and a day nursery.

The striking blue curtain systems in the Wave design harmonize perfectly with the interior design scheme of the Placid Hotel rooms. To control the light at the desks, SG 4830 roller blinds are mounted directly on the exposed concrete beams.

A particular challenge was presented by the SG 4870 roller blind systems in the restaurant, which are tensioned at an angle. In the conference rooms, floor-to-ceiling Wave curtains improve the acoustics of the space. The exposed concrete ceilings of the palliative rooms are discreetly fitted with recessed aluminum profiles.

SELECTED SYSTEM INFO



SG 4830 / Colorama 1 and 2 Alu

Medium-heavy duty chain operated roller blind system

Wall, ceiling or recess fitting

Unique planetary gear ensures smooth, light operation of even the largest blinds

Fabric with resistant aluminum backing for higher reflection and lower transparency. A highly functional fabric with a very textile appearance.

42–43

- A Hand operated curtain track system
- B Electric curtain track system
- C Chain operated roller blind and hand operated curtain track systems



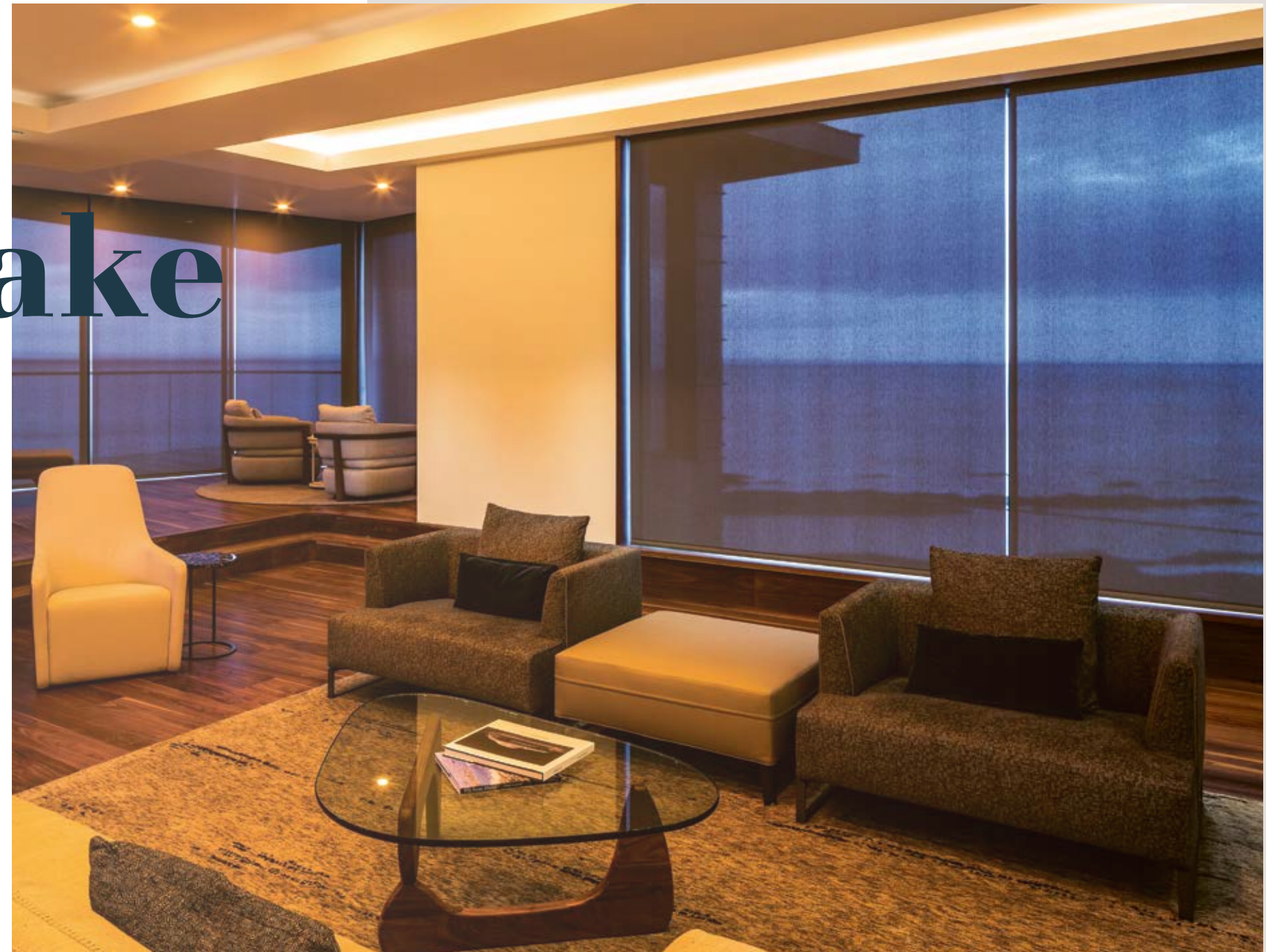
C



A

- A Private home
- B Electric operated roller blind system

B



Ladies Lake

Private Home

This contemporary new house was built on the cliff edge in St. Andrews, Scotland.

The blinds had to offer screening and privacy whilst maintaining the spectacular sea views. The perfect solution was to install SG 4960 motorized roller blinds with Lightscreen fabric throughout the house.

Through detailed design discussion with the architect, blind pockets were designed into the heads of the windows so that when raised the blinds were hidden.

For a cozy feeling, electric curtain tracks were added in the bedrooms.

PROJECT DETAILS

Customer
Tangram Furnishers Ltd.

Photography
Keith Hunter

SELECTED SYSTEM INFO



SG 4960 / Lightscreen

Very quiet and smooth operation due to high-end tubular motor

Various “scenes” programmable

Operation of two systems with one motor for reduced light gap between systems

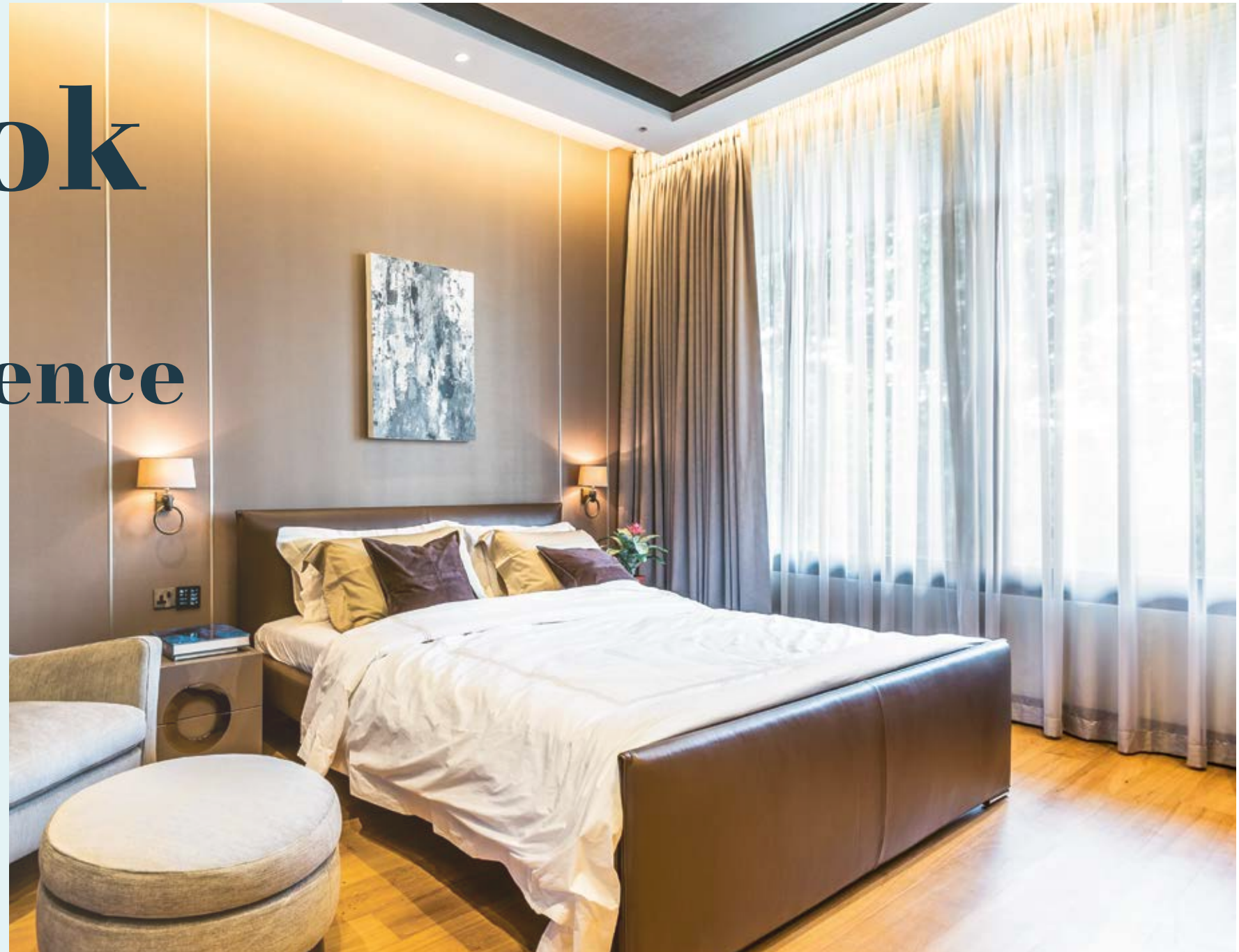
Fixed wall switch, radio remote or app control

Lightweight screen fabric ideal for long roller blind applications

Bangkok Private Residence

The “Smart House” was key to the brief of this project. This home is all about entertainment and the client wanted the wow factor! The Silent Gliss electric curtain tracks had to blend effortlessly into the design scheme and integrate seamlessly with the Crestron home automation system.

The cinema room had to be luxury and functionality at the touch of a button. Motorized curtain tracks SG 5600 with blackout acoustic curtains ensured the vision and sound quality in this AV room was optimized.



A



B



C

PROJECT DETAILS

Customer
Ace Contracts (London) Ltd.

Interior Designer
Koll Leeng

Photography
**Images courtesy of NV Integration,
Micha Schulte**

A/C Electric curtain track system
B Private residence

SELECTED SYSTEM INFO



SG 5600 / customer fabric

The world's most silent motorized curtain track system

Patented roller technology enables extremely smooth operation

Full integration within any home automation system

System can be controlled from anywhere in the world via smartphone, tablet or desktop

The Architects of Silence

Silent Gliss is the leading global supplier of premium interior window treatment systems.

With cutting edge technology and a relentless commitment to precision, we develop and manufacture the world's quietest, smoothest-gliding curtains and blinds.

Driven by our customers' needs, Silent Gliss provides bespoke curtain and blind systems complemented by expert technical advice, installation and support services. Silent Gliss stands for innovative solutions, exceptional design and outstanding quality. Swiss engineered since 1952.

Silent Gliss Inc.

304 Hudson Street, Suite #402b
New York, NY 10013
USA

T +1-718-412-9040

F +1-718-412-9039

info@silentglissamerica.com

silentglissamerica.com